

SUSTAINABLE DEVELOPMENT GOALS



10.6.7 Does your university as a body provide accessible facilities for people with disabilities?

Yes, the University of Business and Technology (UBT) ensures full accessibility for students, staff, and visitors with disabilities across both campuses.

In line with Saudi Vision 2030's inclusivity goals, UBT has systematically implemented infrastructure and design features that remove barriers and provide equal access to all academic and administrative spaces.

Accessibility features are integrated into the university's master plan and include:

- Wheelchair-accessible ramps and pathways at all building entrances and exits.
- Tactile floor indicators for visually impaired individuals.
- Elevators with Braille panels and voice guidance for vertical access.
- Accessible parking spaces reserved near main entrances.
- Disability-friendly restrooms on all floors.
- Emergency call systems for immediate assistance.

These measures ensure that every individual—regardless of physical ability—can navigate campus facilities safely, independently, and with dignity.

Figure 10.6.7 A – Accessible Parking Areas

Photographs showing dedicated parking spaces marked with international accessibility symbols, located near East and North gates for convenient campus entry.



Figure 10.6.7 B – Ramps and Tactile Pathways at Entrances

Images of wheelchair-accessible ramps and tactile indicator guides installed at main entrances, ensuring barrier-free movement and support for visually impaired individuals.



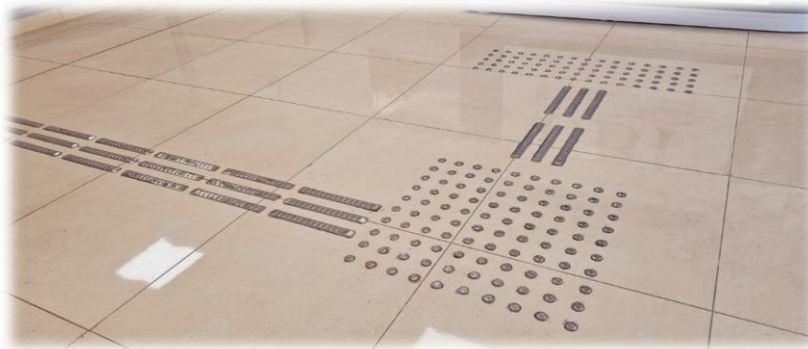


Figure 10.6.7 C – Elevator Access with Tactile Indicators

Photos showing elevators equipped with tactile floor indicators and Braille signage, providing safe vertical mobility between Basement 1, Ground, and 2nd Floor levels.



Figure 10.6.7 D – Stairways with Tactile and Handrail Guides

Visual evidence of stairways featuring tactile steps, handrail support, and guiding strips, ensuring safety for students and staff with partial visual impairment.



Figure 10.6.7 E – Accessible Washrooms (Basement to 2nd Floor)

Images of disability-friendly restrooms designed with wider doors, support rails, and accessible sinks on every floor, promoting inclusivity in essential facilities.

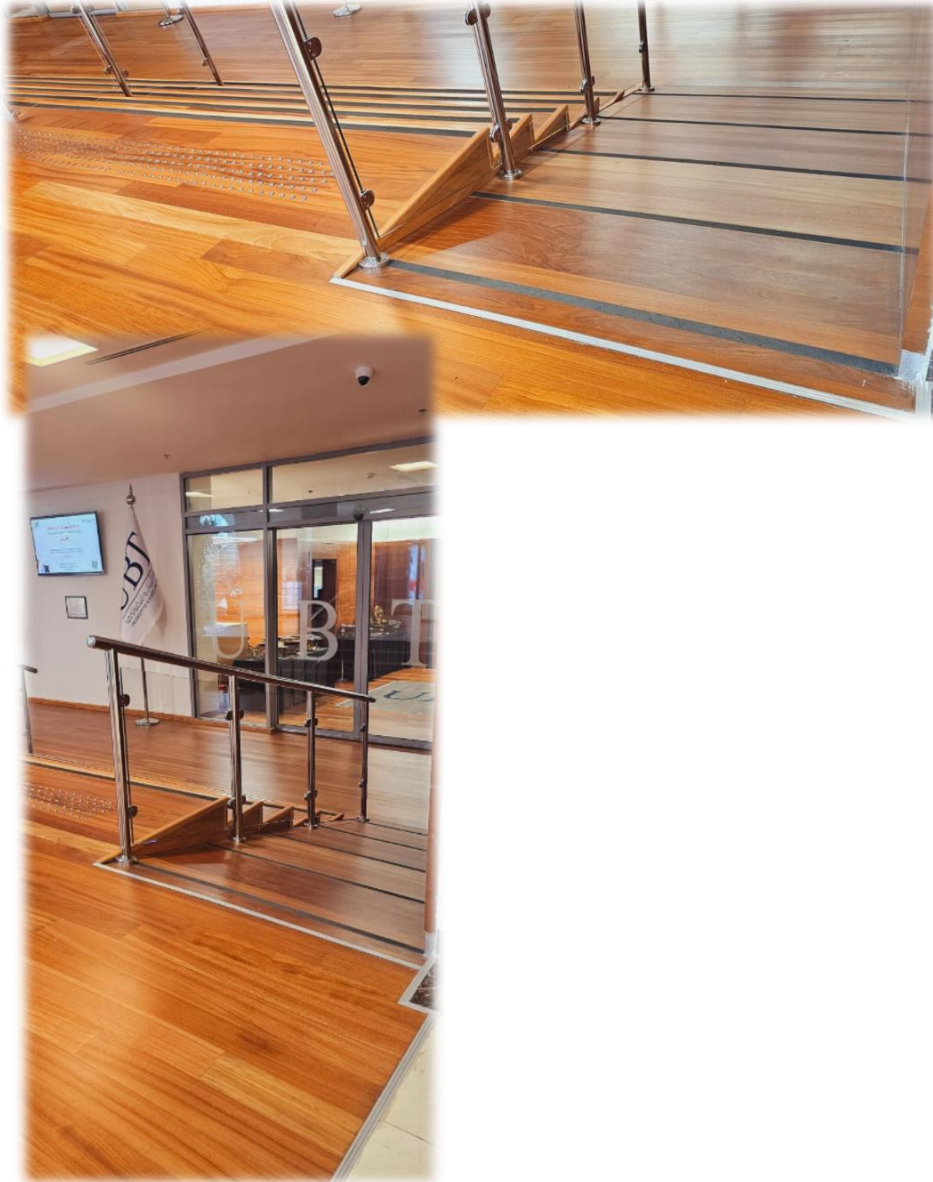


Figure 10.6.7 F – Auditorium and Basement Accessibility

Photos from Basement 1 and 2, illustrating ramps and tactile pathways providing access to UBT’s main auditorium and lower-level classrooms for wheelchair users.



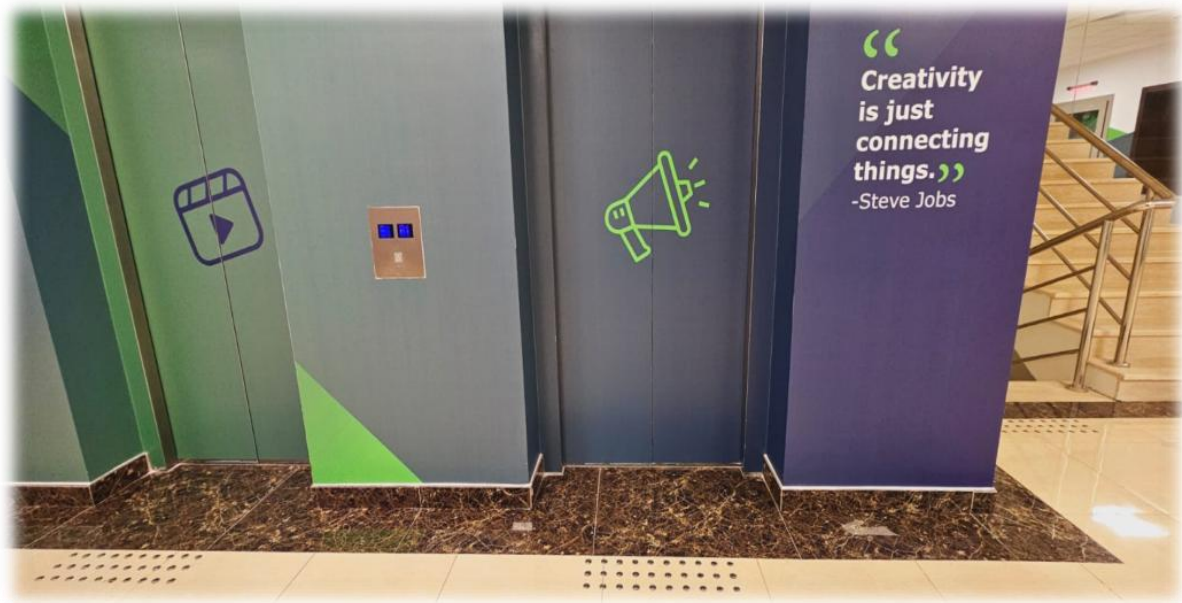


Figure 10.6.7 G – Emergency Call System

Close-up images of emergency call units installed in hallways and common areas to provide immediate communication access for individuals requiring assistance.



